

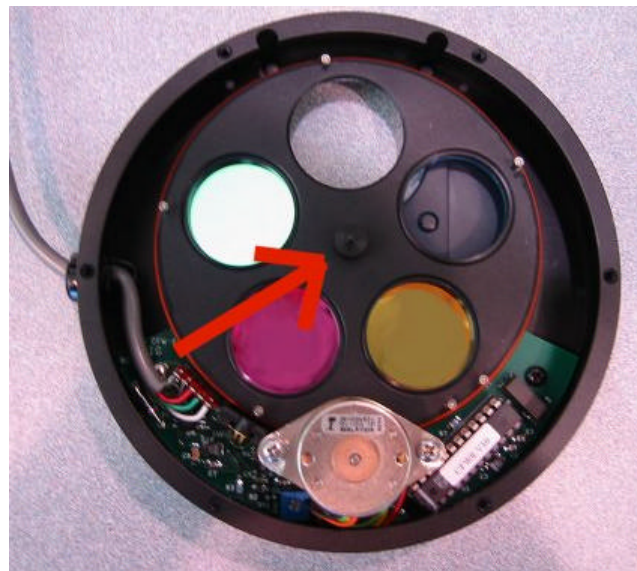
Application Note

Direct mounting your CFW-8A
The SBIG Recommended Method

1. Remove the 6 phillips head screws (indicated by the red arrows) from the top of the CFW-8A assembly and lift off the top cover plate.

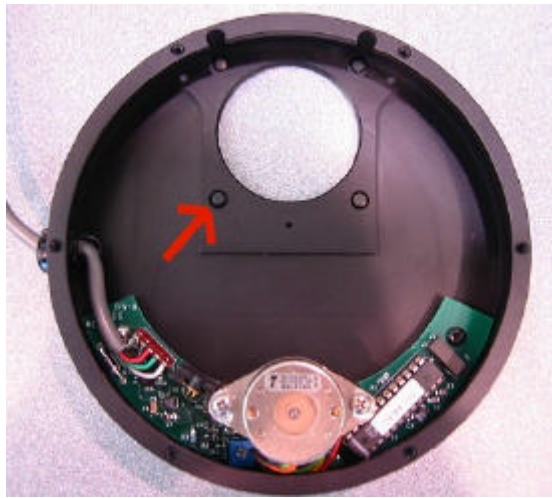


2. Remove the carousel from the CFW-8A by lifting up on the pivot shaft indicated by the red arrow. Set the carousel in a clean, safe place for now.

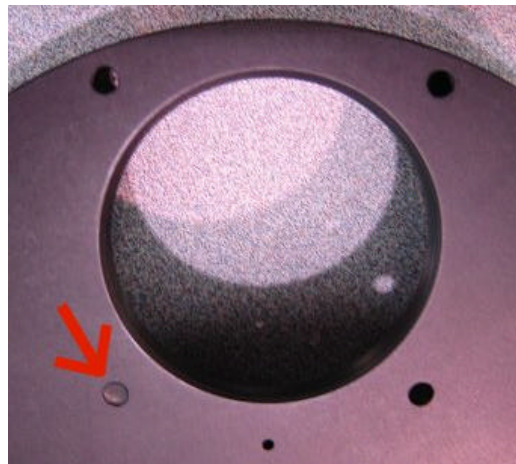


3. The rubber caps plugging the screw holes in the CFW-8A need to be pushed out next.

Direct Connecting your CFW-8



4. Use a blunt non-marring tool to avoid scratching the anodized surfaces. The caps are easiest to push out from the back of the CFW-8A as shown in the image:

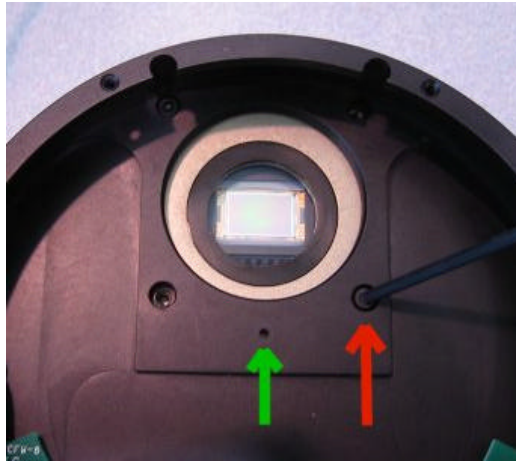


5. Remove the D-Block unit from the front of the camera head by removing the 4 phillips head screws. Put the D-block and screws in a safe location, you may need to use them later to attach optional accessories like the AO-7.



Direct Connecting your CFW-8

6. Set the CFW-8A housing on top of the camera body. Align the holes in the CFW-8A housing with the threaded holes in the camera front plate where the D-Block unit was attached. Use the (4) 4-40 x 3/16" socket head cap screws (provided with the CFW-8A to secure the CFW-8A housing to the camera head as shown by the red arrow in the picture.
7. Reassemble the CFW-8A. Reinstall the carousel; make sure that the bottom center pivot is seated correctly in the small hole indicated by the green arrow. The silver alignment pins at the edge of the carousel need to point up, towards the top cover plate of the CFW-8A. Refer back to image #2 for reference.



8. Replace the front cover. Note the small hole just above the label - the top center pivot of the CFW-8A must be seated in this hole. Wiggle the front cover plate and / or the carousel until the pin fits into place. Replace the 6 screws securing the front cover plate. Attach the cord to the correct port in camera head, and you are ready to start RGB imaging!

