

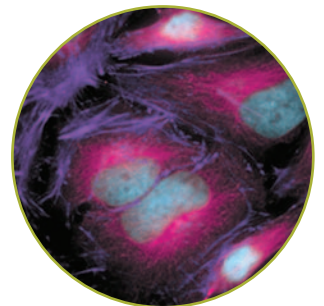
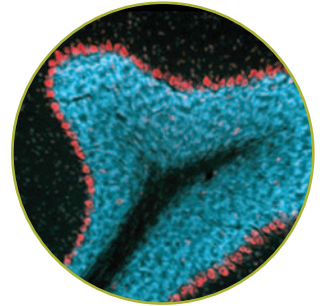
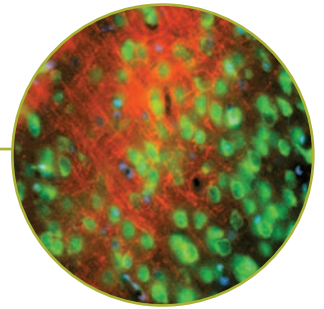
X-Cite® 120 PC

FLUORESCENCE ILLUMINATION

THE AUTOMATED STANDARD IN FLUORESCENCE ILLUMINATION

The X-Cite® 120 PC gives you the convenience of computer control in a fluorescence illumination system. The X-Cite® 120 PC has been designed to provide excellent image quality and long lamp life in a very user friendly system.

- Computer Control
- Pre-aligned Intelli-Lamp™ System
- 2000 hour lamp life





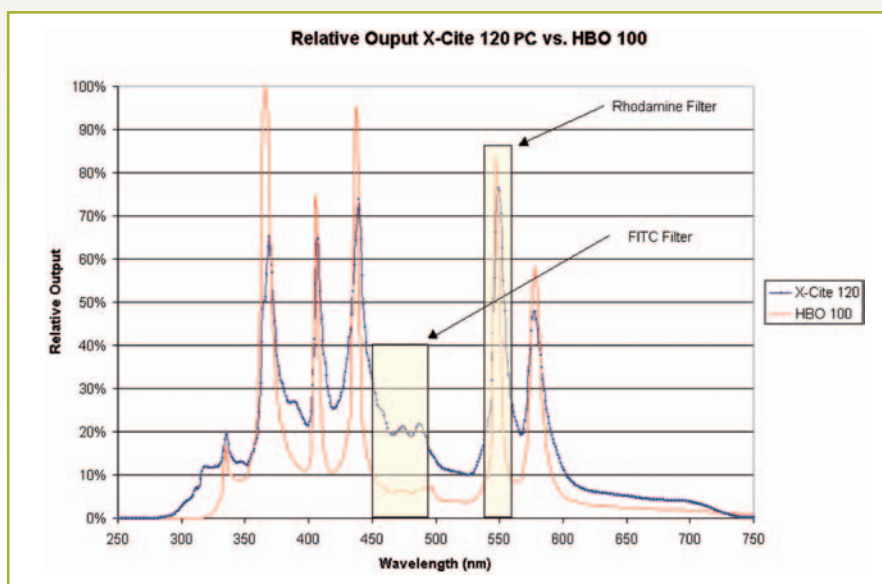
FEATURES:

BENEFITS:

RS232 Communication	PC control of lamp, iris and shutter; integrate in automated system
Software Interface	Simple to use; user friendly
2000 hour lamp life	Fewer lamp replacements saving time and money
Pre-aligned lamp	No alignment required - faster, easier lamp change
Adjustable Iris	Set light intensity to 100%, 50%, 25%, 12% or 0%
Light Guide Connection	Excellent uniformity, no heat is transferred to the specimen
Shutter (200ms response time) and Timer	Control sample exposure time
Intelli-Lamp™ technology powerful 120W lamp	Maintains optimum lamp temperature, automatically accumulates lamp hours
Foot Pedal	Hands free operation
Custom coupling optics	Uniform field of view with various aperture stops and magnifications
CE Marked	Ready for use worldwide

A RICHER SPECTRUM AND A BRIGHTER IDEA

The powerful 120W Metal Halide lamp used in the X-Cite® 120 PC provides excitation intensity comparable to, or better than, conventional mercury arc lamps, with an added benefit: the broader spectrum excites more fluorophores.



RESULTS WITHOUT RISKS: IMPROVED SAFETY

The X-Cite® 120 PC has been designed with safety in mind. Its enclosure and connections have been specially engineered to eliminate light leakage. Its pre-aligned lamp eliminates accidental UV or bright light exposure. Automatic safety interlock features activate during lamp or light guide removal, providing additional accidental exposure protection. The system's environmentally friendly lamp employs a quick-strike arc that eliminates hazardous ozone production. Your lab equipment is also protected from power surges and RF interference. The X-Cite® 120 PC meets electromagnetic compatibility standards for conductive and radiated emissions.

X-Cite® 120 PC

THE INTELLIGENCE OF X-CITE

The X-Cite® 120 PC system is ideally suited for computerized fluorescence microscopy applications. It uses a 120-Watt lamp to deliver rich spectral excitation with a more uniform field of view than conventional fluorescence illumination systems. The RS-232 interface and software enabling features allow customers to control the iris, lamp, built-in shutter and timer via computer.

PROPRIETARY DESIGN: INTELLI-LAMP™ SYSTEM

Ease of Use

No more difficult lamp changes – just snap out the old lamp and snap in a new one. It's even pre-aligned for further convenience. Rated at 2000 hours, this powerful 120W Metal Halide lamp has up to ten times the life span of a conventional lamp. That means significantly fewer replacements, saving you both time and money. Connecting the X-Cite® 120 PC to your microscope is easy, too. Simply snap the adaptor into your existing light port and you're ready to work.

Better Results

The Intelli-Lamp™ system's proprietary design continually monitors lamp temperature, preventing life-shortening restrikes until the lamp cools to a "safe-to-restart" state. The design also helps ensure that the X-Cite® 120 PC operates at a consistent intensity – both over time and from lamp to lamp – for reliable and repeatable results. Finally, working with the liquid light guide, the 120W Metal Halide lamp provides rich spectral excitation and produces a totally uniform field of view, ensuring no heat is transferred to the specimen.

Computer Control

The RS232 connection allows you to control the lamp, shutter and iris from a PC. The X-Cite® 120 PC includes a software interface for simple control of the illuminator. The X-Cite® 120 PC can also be integrated into an automated system.

Built-in Shutter and Timer

The X-Cite® 120 PC includes a built-in shutter with a 200ms response time. There is also a built-in timer to control exposure timing and reduce photobleaching from over exposure. Foot pedal control of the shutter allows you to keep your hands free for other important tasks like focusing and navigation.

Adjustable Iris

An adjustable iris lets you set the optimal light intensity on the illuminator.



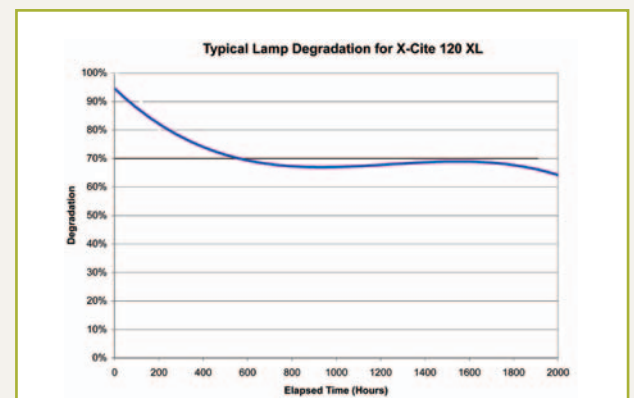
► Pre-aligned lamp



► Software Interface - Also available in Mac platform

2000 HOURS OF CONSISTENT LAMP LIFE

For both quality and safety reasons, most conventional illumination lamps have a maximum recommended life of up to 300 hours. The Metal Halide lamp used in the X-Cite® 120 PC has a typical life of 2000 hours – and delivers consistent intensity from first use to last.



SPECIFICATIONS

INCLUDES

Lamp module, liquid light guide, microscope adapter, software CD, grounded and shielded power cord, 9-pin serial cable, manual and quick start guide

LAMP

Proprietary 120W Metal Halide

LAMP LIFE

2000 hours

POWER SUPPLY

High efficiency, switch mode, line isolated, 90-264 VAC, 47-63 Hz, universal input

WARM-UP PERIOD

90 seconds (typical)

PANEL CONTROLS

Power on/off, Mode Select, Adjust Up/Down, Start/Stop

PANEL DISPLAYS

Iris Setting (100%, 50%, 25%, 12%, 0%), Accumulated Lamp Hours, Exposure Time (0.2-999.9 sec), Lamp On, Shutter Open, Lamp Warm Up, Lamp/Shutter Error

DIMENSIONS

13.5" x 5.5" x 6.5" (L x W x H)

WEIGHT

7 lbs. (3.18 kg)

WORLDWIDE CERTIFICATIONS

CE Marked, Certified to IEC, Canadian and US Standards

WARRANTY

1 year (excluding lamp and light guide)

PLEASE NOTE: Hg-LAMP CONTAINS MERCURY, Manage in Accord with Disposal Laws, See: www.lamprecycle.org or call 1-800-668-8752



EXFO Photonic Solutions Inc. is certified under the ISO 9000 Quality Management System. Our global customers can trust that EXFO strives to be the best possible supplier in all aspects of our business.

EXFO Life Sciences & Industrial Division. 2260 Argenta Rd., Mississauga, Ontario L5N 6H7 Canada
Tel: 1.905.821.2600 | Fax: 1.905.821.2055 | x-cite@exfo.com
Tollfree: 1.800.668.8752 (USA & Canada) | www.exfo-xcite.com
EXFO Electro-Optical Engineering Inc. 400 Godin Ave., Quebec City, Quebec G1M 2K2 Canada
Tel: 1.418.683.0211 | Fax: 1.418.683.2170

EXFO has made every effort to ensure that the information contained in this specification sheet is accurate. However, we accept no responsibility for any errors or omissions, and we reserve the right to modify design, characteristics and products at any time without obligation. Contact EXFO for prices and availability or to obtain the phone number of your local EXFO representative.

IN CONTROL



Life Sciences & Industrial Division

SPXCITEPC.2AN Printed in Canada

